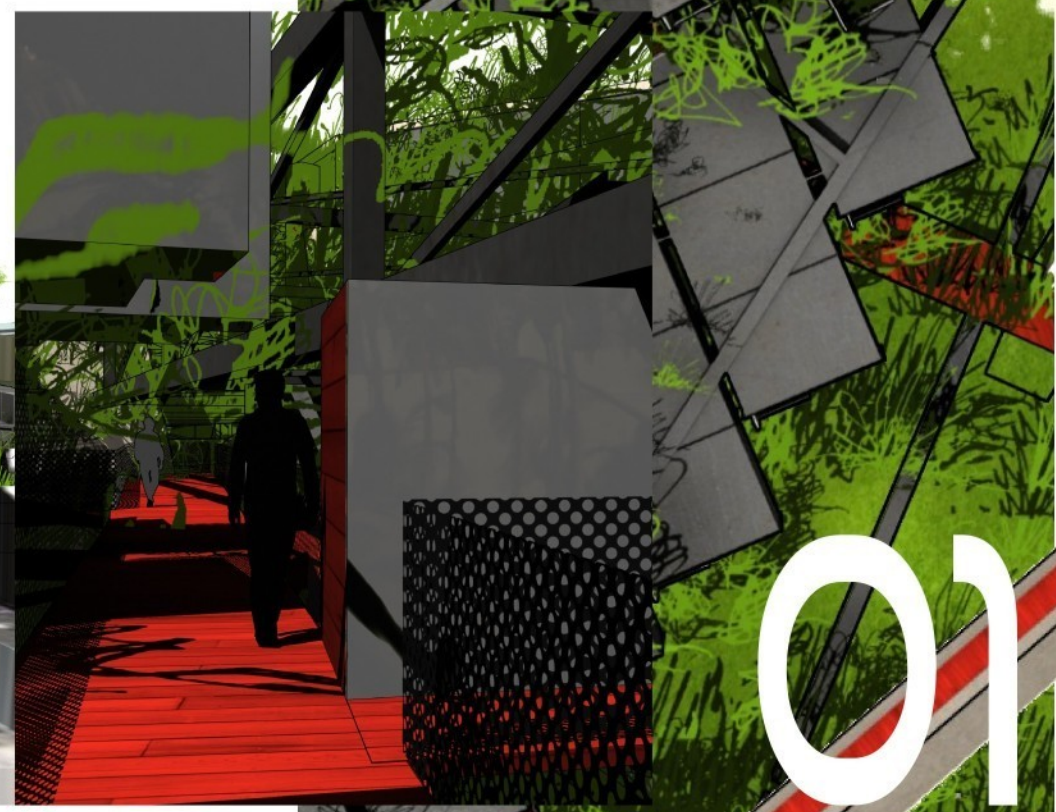
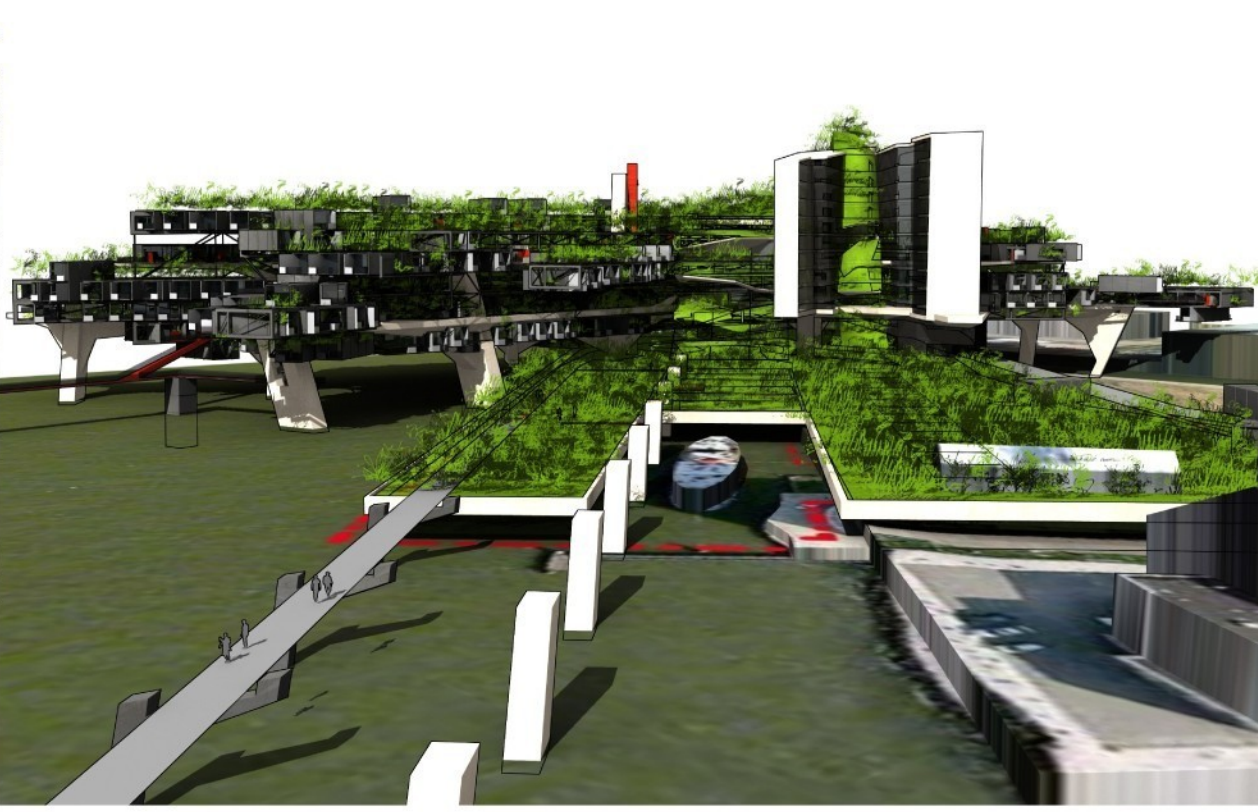
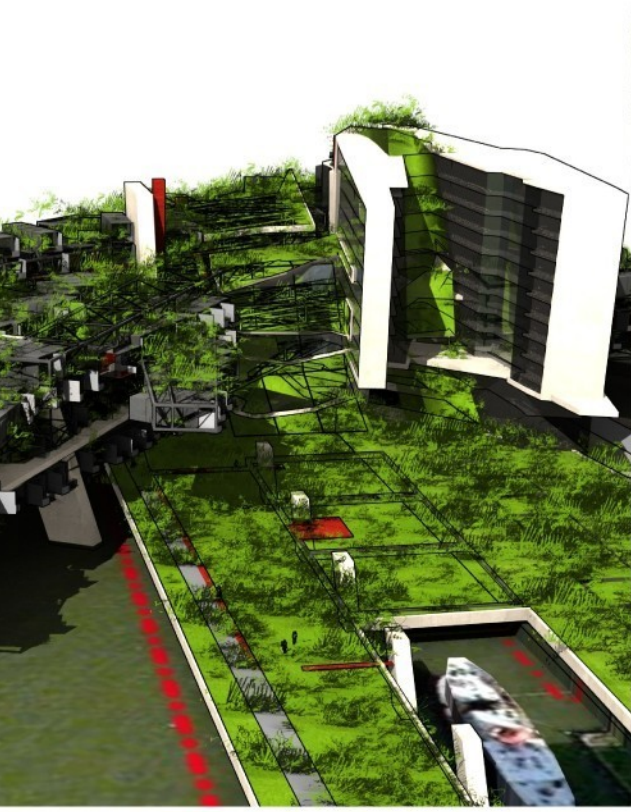
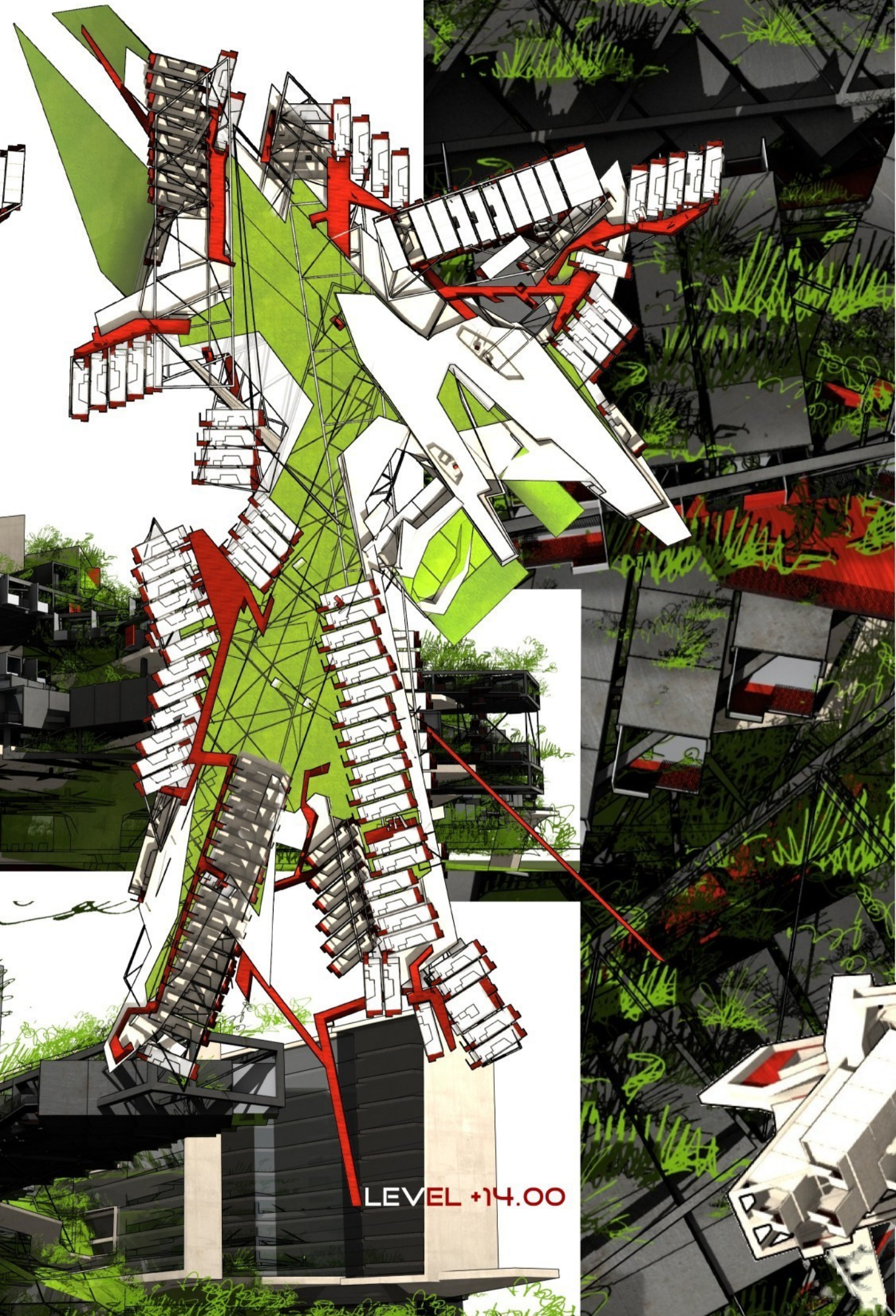
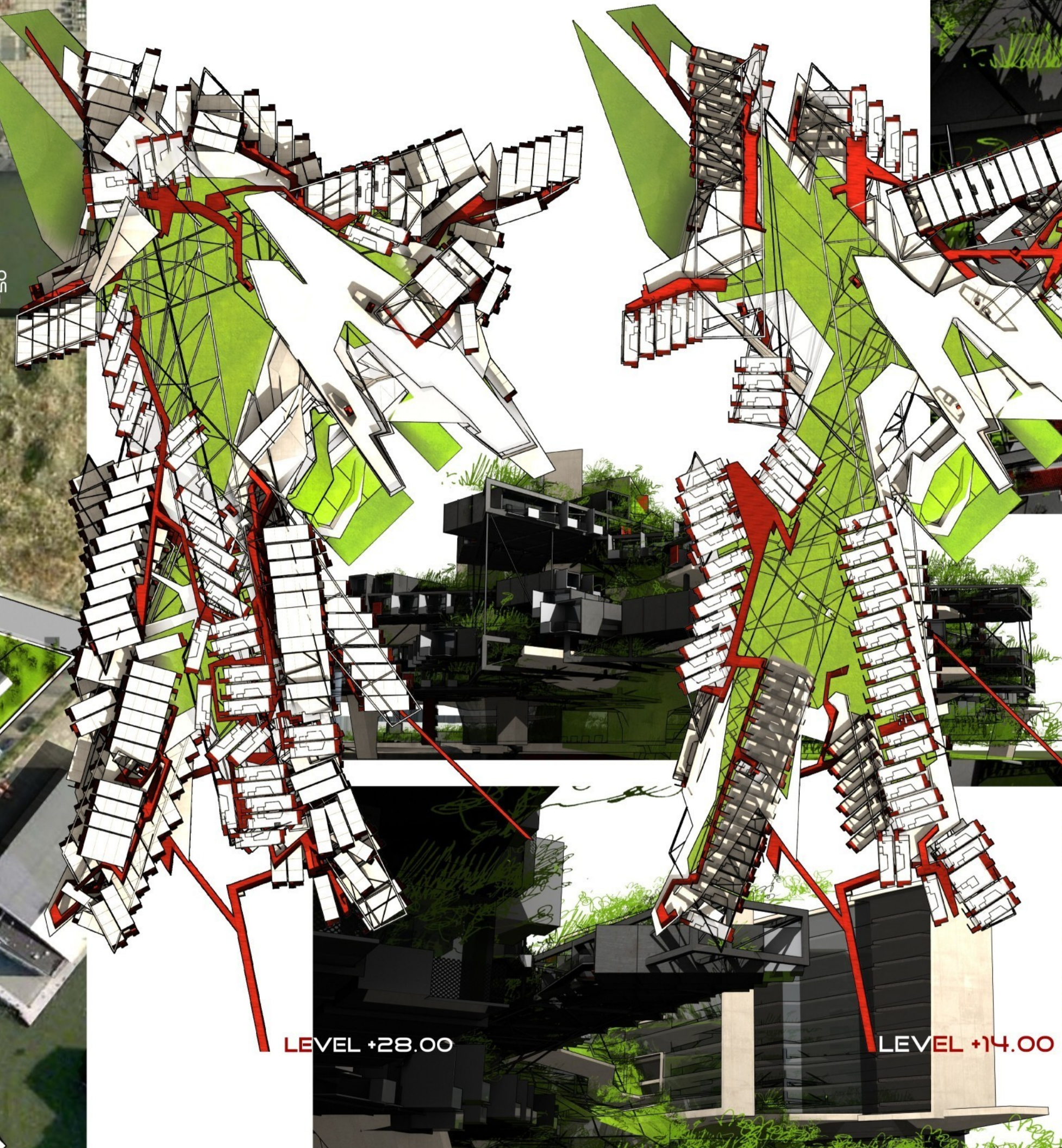
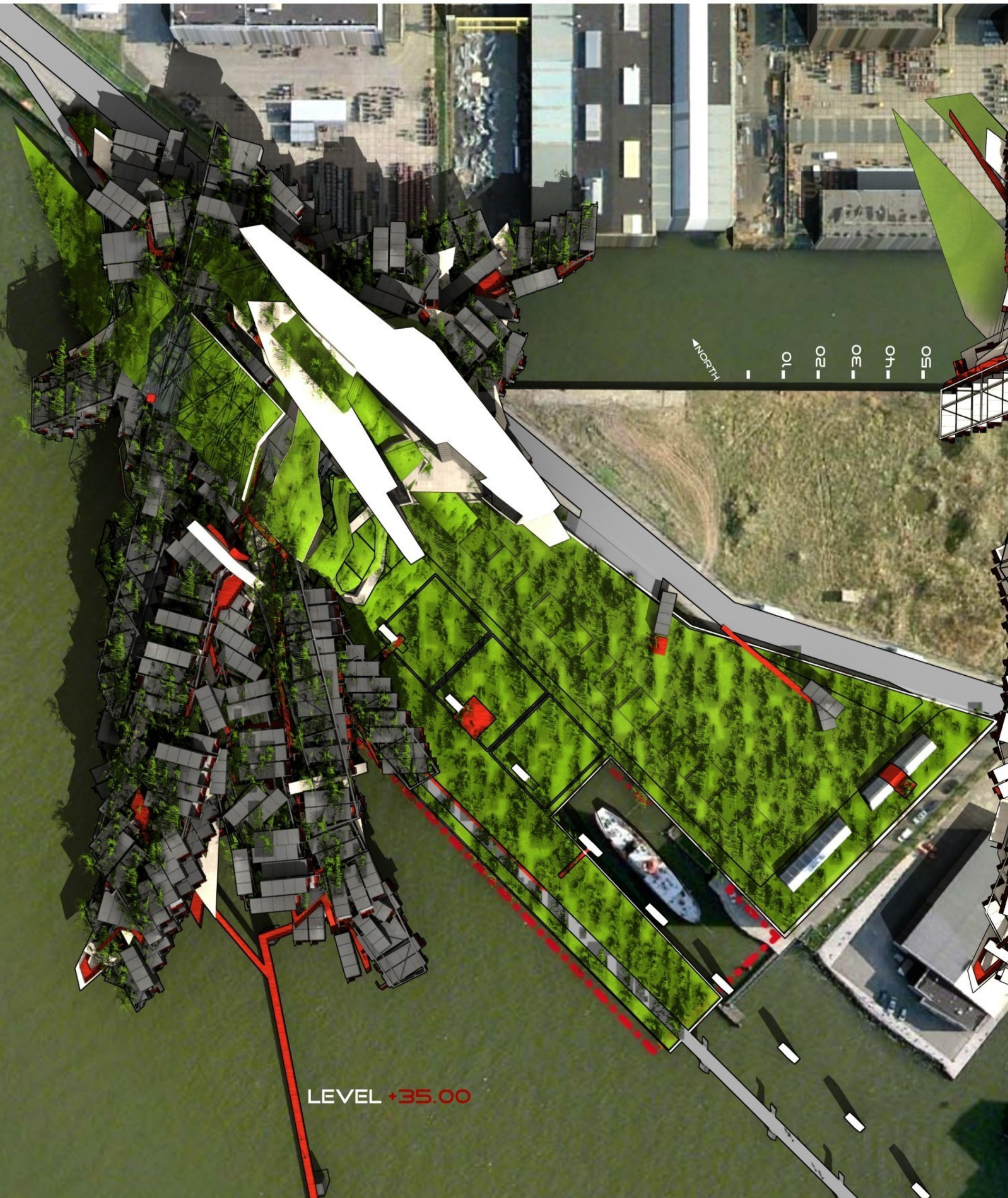
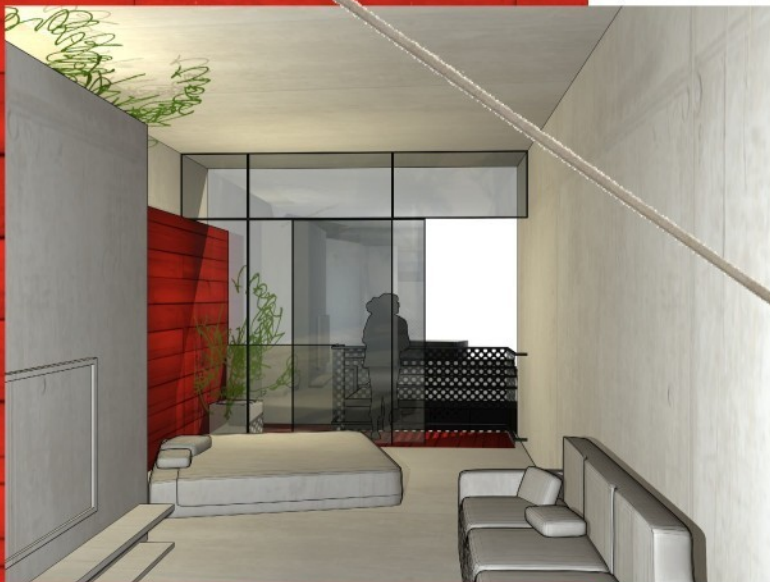
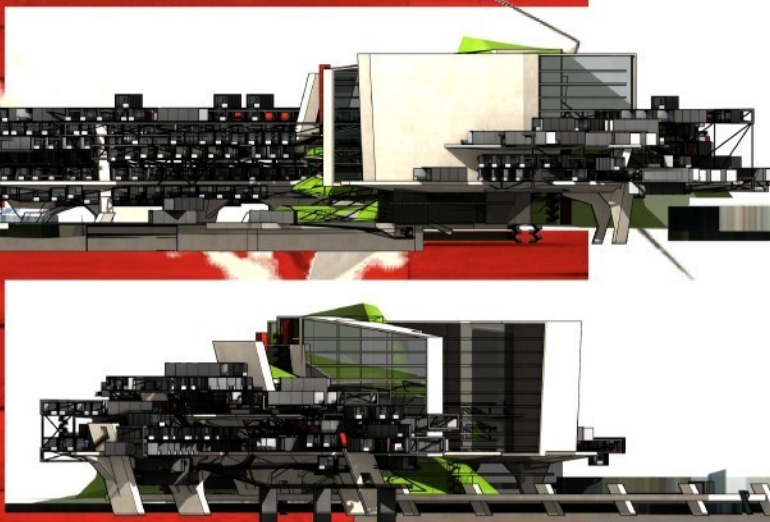


NO STACK





APARTMENTS

A mix of 1-dorm, 2-dorms and 3-dorms apartments, each one with an uncluttered front view

GREENLINK

The greenlink is a buffer shared between offices and residential areas.

OFFICES

Two 45m-high towers with free floor plans

PARK

The whole ground level is a public park with shelters for cultural activities

The **COMPLEXITY** emerges from the combination of simple patterns:
Extreme **HUMAN DENSITY**, far from generating insecurity, creates exceptional community behaviour and social control. **PRIVACY** is obtained by careful space design rather than anonymity. Lightweight metallic containers allow a paradoxal **NON-STACKED**, individuality-rich lifestyle, together with heavy use of **PREFABRICATION**. The mixed steel & concrete free-form structure completely frees the ground level, leaving 100% of its area to a public park.

The central core of the project forms a series of **SHARED SPACES** between inhabitants and workers. If we understand **ECOLOGY** as a change in philosophy and lifestyle rather than the application of techniques, we must also permit the application of such changes in everyday life, allowing people to imagine and perform their own recycling circuits, and actively participate in **URBAN REFORESTATION**. The project is also a social **PROCESSOR** that

gathers a large array of family sizes, provides employment, old docks area, private space permits levels of **COMMUNITY**.

reorient the induces public/sharing and simultaneously high levels of **INDIVIDUALITY** and

